



Globally, **RaxVision** is recognized as the leader in microscope & measurement, provides a wide range of products for scientific, healthcare & industrial sector.

A believer is always being in the forefront of high quality of products and performance, **RaxVision** continues to develop revolutionary products in the scientific, electronic & precision technologies.

RaxVision is widely recognized as the brand that produces high quality precision products such as microscope and video inspection system. Since 2002, **RaxVision** R&D team has revolutionized the world of optical and measurement with the launching of new series optical microscopes and video inspection system. The model of E800M, Y100 and SMZ has now become the reference standard in medical, industrial and scientific field.

IBS-100 Inverted Biological Microscope

- With pre-centerable Phase Annulus, available to observe low contrast or transparent specimen
- Excellent optical function with infinite optical system
- Innovative stand structure. Sharp image display. Convenient operation and special design for viewing incubating cell tissue



Specifications:-

- Viewing Head: Trinocular Head inclined at 30°, inter-pupillary 48-75mm
- Eyepiece: High point, extra wide field eyepiece EW10X/22
- Objective: LWD infinite plan objective – 4X and 40X, Infinite Plan Phase Objective – PH10X and PH20X
- Condensor: ELWD condenser NA0.3. LWD 72mm, (without condenser 150mm)
- Stage: Plain Stage 160x250mm, Glass Insert, Attachable mechanical stage, X-Y Coaxial control, Moving range 120x78mm, Auxiliary stages 70x180mm,
- Illumination: 6V30W
- Filter: Diameter 45mm, Blue, Green and ground glass



E800MF Fluorescent Research Microscope

E800MF features superb optical quality of E800M microscope with incorporation of high quality fluorescent observation module. It is widely used for research laboratories. Infinite Optical System, Kohler Illumination, Phase contrast and Fluorescent modules makes E800MF the ideal inspection microscope



Specifications:-

- Optical System: UIS (Universal Infinity System)
- Interpupillary distance: 48 – 75mm
- Eyepiece: High point and wide field eyepiece EW10X/20mm
- Objectives: Infinity plan-fluorescent 4X, 10X, 40X (Spring) and 100X (Spring) (Oil), infinity plan 4X, 10X, 40X & 100X (Oil)
- Double Layer Stage: 185mm(X) X 142mm(Y)
- Focusing: Stroke per rotation of 36.8mm, coarse & fine full stroke of 25mm and minimum fine adjustment of 1 micron
- Fluorescent Filter: Blue, green exciting light filter system and ordinary light system
- 100W HBO ultra hi-voltage spherical mercury lamp



Y100 Biological Microscope

The Y100 features ingenious stand, backward nosepiece and flexible set up. It can be suitably used in biological, pathological, bacteria, histological, immune and genetic field



Specifications:-

- Viewing Head: Binocular Head inclined at 30°, inter-pupillary 55-75mm
- Eyepiece: EW10X/22
- Objective: 4X, 10X, 40X and 100X (oil)
- Stage: Double layer, 140 x 140mm / 75 x 50mm
- Illumination: 6V30W
- Filter: Blue & Green



E800M Research Microscope

The new microscope for research laboratories. Infinite Optical System, Kohler Illumination, providing excellent optical quality and making image perfect



Specifications:-

- Viewing Head: Comfortably observing with compensation free binocular head inclination 30°
- Eyepiece: Larger viewing area with extra wide field eyepiece EW10x/20. Focus control with diopter adjustable
- Objective: Perfect image with infinite plan achromatic objective, 4X, 10X, 40X and 100X (oil)
- Stage: Rectangle double layers mechanical stage 185X x 142mmY, comfortable operation with low position adjustable knobs and specimen holder (double slide holder, rubber grip & stage focus lock)
- Illumination: 6V30W



E510 Teaching Microscope

Equipped with 5 heads for 5 persons observing at the same time. With the features of infinite optical system, effective illumination, LED pointer and images coherence, it is widely used in clinic, research and teaching demonstration



Specifications:-

- Infinite Optical System
- Viewing Head: Compensation free trinocular head (X1), inclined at 30° and 360° rotatable, inter-pupillary 48-75mm + Compensate free binocular head (X4), inclined at 30° and 360° rotatable, interpupillary 48-75mm
- Eyepiece: WF10X/22
- Objective: 4X, 10X, 40X, 63X and 100X
- Condensor: Swing type, N.A 0.9/0.25
- Stage: Double layer, 185 x 142mm / 75 x 55mm
- Kohler Illumination: External illumination, 100W
- Pointer: Brightness adjustable green LED pointer



IMS100 Inverted Metallurgical Microscope

The new Infinite Optical System metallurgical microscope provides excellent optical functions. Designed with stable structure, advanced stage design and ergonomic operation, it is widely used to observe and identify the structure of various metal and alloy



Specifications:-

- Viewing Head: Trinocular inclination 30°
- Interpupillary distance: 48 – 75mm
- Eyepiece: High point and wide field eyepiece EW10X/20mm
- Objective: Plan infinity 4X, 10X, 20X and 40X
- Nosepiece: Quintuple
- Plain stage as standard package
- Focusing: Coarse stroke 37.7mm per rotation, fine adjustment of 0.2mm per rotation
- Blue, yellow, green and ground filter.
- Illumination: Built -in Transmitted Kohler illumination halogen 12V/30W



MM10A Metallurgical Microscope

It is the most ideal microscope in research work in metallography, mineralogy, precision engineering, electronics etc. It is also suitable for scientific research, teaching and demonstration in the colleges and factories



Specifications:-

- Compensation free trinocular head (30°) including analyser lens
- Quintuple objective lens nosepiece
- PL5X/0.12/1.83mm, PL10X/0.25/8.9mm, PL20X/0.4/8.7mm, PL/50X/0.70(spring)/2.02mm and PL80X/0.8(spring)/0.96mm plan achromatic objective lens (magnification/numerical aperture/working distance)
- High-eyepoint eyepiece WF10X (F.N. 18)
- 274x274mm mechanical stage with 203x203mm travelling
- 6V20W vertical adjustable illumination



SMZ-U Series Parallel Optic Stereo Zoom Microscope

SMZ series stereo zoom microscope is equipped with 2 parallel beam paths with high contrast optical system and high zoom ratio as well. Its common objectives with non-coaxial imaging technique improves definition of the visual edge, strengthen 3D effect and offer a clear effect on observation object with bright back ground



Specifications:-

- Ultra high zoom ratio of 1:8
- Objective zoom range of 0.65X - 5X
- High-eyepoint eyepiece of SWF 10X/22mm
- The interpupillary distance adjustable between 48 – 75mm
- Working distance of 95mm, higher working distance for more work space
- Adjustment of ±5mm dual adapter to increase sharpness of the image
- Come with LR-01 fluorescent lighting set



MTS Step Magnification Microscope

MTS series is a wide field step magnification microscope. It is compact, light weight and cost effective with multi-coated high contrast optical system which provide 3D image, superb performance and easy operation



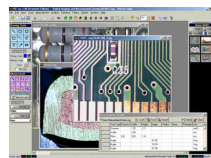
Specifications:-

- Magnification: 10X/20X (MTS 12), 10X/30X (MTS 13) and 20X/40X (MTS 24)
- Eyepiece : Super wide field 22mm SWF-10X
- Special features : Adjustable magnification using side adjustment knob
- Standard working distance : 100mm
- Come with LR-01 fluorescent lighting set



DIMAS Plus Software

An affordable gateway to transfer PC/Notebook into the most versatile digital video image analysis, measurement and management system



Specifications:-

- Selectable video source standard, NTSC/ PAL/ SECAM, or Digital Camera (USB or Firewire (IEEE 1394))
- Save captured image as jpg, jpeg2000, .bmp, tiff, gif, png etc
- Plot histogram chart for the image area within the ROI selected by user
- Advanced measurement tools to improve measurement cycle time and accuracy
- Real Time Image Zoom/Magnifier view on the mouse pointer for measurement

MLCD2 High Resolution Video Zoom Microscope

MLCD2 Video Microscope adopted modern ergonomic digital imaging techniques. It makes observation more comfortable and reduce fatigue caused by using a traditional microscope. It features high resolution 3D image display with laser pointer



Specifications:-

- Zoom range: 0.7X – 4.5X
- Zoom ratio: 1: 6.5
- Total magnification: 2.5X - 152.4X (8" LCD microscope)
3.2X-198.1X (10.4" LCD microscope)
- Field of view: 1.3mm - 81.6mm
- LED ring light: DC 12V, with adjustable brightness
- 3D angle attachment: 35° for 0.75X objective lens
- Laser pointer: 650nm
- Video Output: BNC connector/S-Video connector



RMZ745 Dissecting Microscope (LED Lighting)

RMZ745 dissecting series is wide field zoom stereo microscope with high performance and high zoom ration. It is a fully multi-coated high contrast optical system which provide a brighter and more distinctive image even at the peripheral of the field of view



Specifications:-

- Multi-coated high contrast optical system
- Zoom Objective Magnification: 0.7x – 4.5x, ratio: 1:6.5
- Parfocal system to minimise the focusing adjustment from low magnification to high magnification
- Working Distance: 118mm
- With high eye-point and wide field eyepiece SWH10X (F.N. 22)
- Inclined 45 degree and main body can be rotated 360 degree
- Both eye-tube with diopter adjustment ± 6mm
- Inte-rpupillary distance adjustment range from 55mm to 75mm
- Ergonomic design for handling and transportation



ML-30 High Resolution Zoom Microscope

The ML-30 series of monocular zoom microscopes are designed for use with CCD and digital video cameras, to present an image of the material being examined to a computer or television monitor



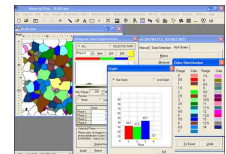
Specifications:-

- Zoom Objectives: 0.65X-4.5X
- Zoom Ratio: 1:7
- Working Distance: 95mm
- Come with fluorescent ring illumination



Material + Metallurgy Software

Nodules analysis, Coating Thickness Measurement, Depth of Width Measurement of Decarburization, Phase percentage with display by colored overlays, Grain Size No., Porosity Analysis, Graphite Flakes Measurement, Non-Metallic Inclusion Rating, Particle Size and Volume Percentage



Specifications:-

- Image Editing: Cut, copy, paste, conversion to other format eg. BMP, JPG, TIF, PNG, GIF & PSD, montage feature to merge stored image together , grid creation, drawing tools etc
- Viewing: Zoom in/out, image rotation and flipping, intensity histogram, image Information etc
- Image Processing: Routine filter, special filters and kernels, edge detection, measurement, count and classification, Threshold practical measurement, morphometry, locational, phase, nodules, porosity, coating thickness, decarburisation, grain size and report can be exported to MS Office or Excel